



The future of the McLaren Vale and Districts War Memorial Hospital site



Discussion Guide

Website: <https://kalyra.org.au/community-engagement-mclaren-vale-hospital/>

Follow us on Facebook: [McLaren-Vale-Hospital-Community-Engagement](https://www.facebook.com/McLaren-Vale-Hospital-Community-Engagement)



Foreword

Sara Blunt, CEO Kalyra

I attended the huge meetings at Tatachilla Lutheran College on 4 July 2023 and again on 25 October 2023. Cold, dark and wet nights and hundreds turned out, impressing me with the strong community voice in McLaren Vale.

I heard the passion of the hundreds of community members who made it clear they wanted their say in decisions about the responsible, sustainable and long-term management of the hospital site for community benefit. They wanted to ensure their elected local Hospital Board Members decision was clearly supported with a strong voice.

Kalyra's long term Vision of belonging and community matches the passion shared by the Hospital members. We know the future of this site is very important to the people of McLaren Vale and nearby districts.

While there are generalised needs across the population, at the local level the nuance varies. We committed to this community engagement process to develop a vision for the hospital site nuanced to the McLaren Vale community's needs. We are doing this through listening and gathering information across the breadth of the community and through the people on the Advisory Group.

Kalyra intends to use this engagement, and the contribution made by the community, to shape the future direction of the site, ensuring that it continues to be a site which delivers services and supports community well into the future, as it has for over 80 years.

We look forward to hearing your views and working with the community in planning the future of the site.

Sara Blunt
CEO Kalyra

“
I heard the passion of the hundreds of community members who made it clear they wanted their say in decisions about the responsible, sustainable and long-term management of the hospital site for community benefit.
”

Purpose of the engagement

Kalyra is starting to plan the future of the McLaren Vale and Districts War Memorial Hospital (MV&DWMH) site. To ensure the site meets the needs of the community, Kalyra is commencing an engagement process to understand the communities current and future needs. This process aims to hear from as many voices as possible.

Leading the process is the McLaren Vale and Districts War Memorial Hospital Site Community Advisory Group – a group of diverse community members who have volunteered their time to support Kalyra host a genuine engagement process.

You can learn more about the Advisory Group [here](#).

What is being discussed?

As part of the engagement process, we want to explore three main questions:

- What aspects of the site do you value and not want to lose?
- What might be needed on the site – in 2 years, 10 years and 30 years?
- What do you want to see improved or changed on the site?

How you can be involved?

Tell us what you think at <https://www.surveymonkey.com/r/McLarenHospital>.



There are also a range of ways you can be involved in this process. Visit [Kalyra's Community Engagement web page](#) to find out more and follow our [Community Engagement Facebook page](#).

History of the McLaren Vale and Districts War Memorial Hospital Site

MV&DWMH was a community owned, not-for-profit health organisation which had its origins in 1947 when the three local district councils of Willunga, Noarlunga and Meadows established the first Hospital Board.

In 1947, the Hospital site was donated to the Board by Mrs Katherine Hall who then owned the land and lived in the 2 storey 1862 house on site - "Tsong Gyaiaou".

The hospital was erected to commemorate those who died in service or had been killed in action, and was opened 'for business' on 28th April 1951 by the Governor Sir Willoughby Norrie.

The original Hospital contained 14 beds and operated as the primary hospital for the district. More recently, as hospital services have been centralised in Noarlunga and Flinders, the Hospital has offered palliative care, after surgery recuperation and visiting specialists.

However, the facility struggled for many years to be viable as it faced the challenges of ageing infrastructure, escalating costs, and difficulties in recruiting doctors and nurses.

As a consequence, the Hospital officially closed on 30 June 2023.

Currently, the Hospital site remains the home of McLaren Vale SA Ambulance station, GP and allied health clinics, Meals on Wheels, a large op shop, and the historic building known as Tsong Gyaiaou. The hospital has a war memorial rose garden with a flagpole and black granite plaque, which is used for ANZAC services.

On the 4th of July 2023, at a Special General Meeting, MV&DWMH members voted in favour of a merger with James Brown Memorial Trust (Kalyra), with 86% of voting members being in favour. Kalyra is committed to engaging with the local community to ensure local needs drive the future use of the site.

About Kalyra

Kalyra was established in 1892 by benefactor Jessie Brown to provide services for people in need. Today, we exist so that people can improve and sustain their quality of life and live in communities where they feel they belong.

We know current research evidences a sense of belonging and community is the critical element leading to wellness and long life.

Kalyra's focus is on older people, the growing numbers over 55, as the demographic needing services close to home to achieve Jessie's vision. Intergenerational communities are important to community too and Kalyra has strong intergenerational partnerships. The co-located Montessori Middle School at Kalyra Woodcroft Aged Care is a good example.

The legal governance structure of Kalyra is of a not-for-profit, a charity (the James Brown Memorial Trust). This means the Trust focuses on long term sustainability and any surplus funds are returned to the continual development of the business. The Trust has been managed well and has been serving South Australians for 132 years, providing health, care, accommodation and services in South Australia.

Kalyra currently owns and manages three sites in McLaren Vale, providing services for more than 350 people through the Vineyard Village, McLaren Vale Village and McLaren Vale Residential Care home adjacent to the hospital. We are proud to touch the lives of many more through the extended families and friends of all these people.

Why Kalyra is engaging the community

Kalyra is committed to conducting an engagement process with the local community to ensure that their voice is central to any future plans for the site.

Kalyra is committed to:

- **Working together and with** the local community, users of the hospital spaces, residents, staff and potential future users of the hospital site to plan its long- and short-term future.
- **Seeking to support the agency and autonomy** of the local community and look to support services that the community can design and deliver.
- Being **transparent, open and share** information.
- Working to **build social connection and strengthen the community fabric**.
- **Respecting place** – respect the history, heritage and environment of the hospital site.

What is Kalyra's intention for the Hospital site in the short term?

Once the contractual process completes, Kalyra is committed to providing a facility that will support the McLaren Vale and Districts communities into the future.

This will include moving forward in consultation with SA Ambulance Services, the Wellbeing GP Clinic and Clinpath Pathology. The hospital kitchen will continue with food preparation for Meals on Wheels and Kalyra Residential Aged Care.

- Pursuing a **practical approach which is tailored to the community**.
- **Using and valuing the knowledge and skills** of hospital staff, Kalyra staff and our residents.

Kalyra intends to use this engagement and the contribution made by community to shape the future direction of the site, ensuring that it continues to be a site which delivers services and supports community well into the future - as it has for over 80 years.

This discussion paper is designed to kick start that conversation.



So, what do we know about the future?

In determining the future of the site, it might be useful to think about what the region is going to look like and what we might need in the township of McLaren Vale and the surrounding areas.

Of course, this is hard to predict ... but this is what we know and what planners expect to happen.

Our Population

The 30 Year Plan for Greater Adelaide¹ produced by the State Government, forecasts limited growth in the McLaren Vale / Willunga area over the next 20 years².

The combined population projections for McLaren Vale, McLaren Flat, Tatchilla, Blewitt Springs, Seaford Heights, a part of Old Noarlunga, Whites Valley, Willunga, Willunga South, The Range and Sellicks Hill over 5-year intervals are as follows:

SA2 name	2021	2026	2031	2036	2041
McLaren Vale	7390	8460	9442	9792	9775
Willunga	3626	3800	3928	4068	4178

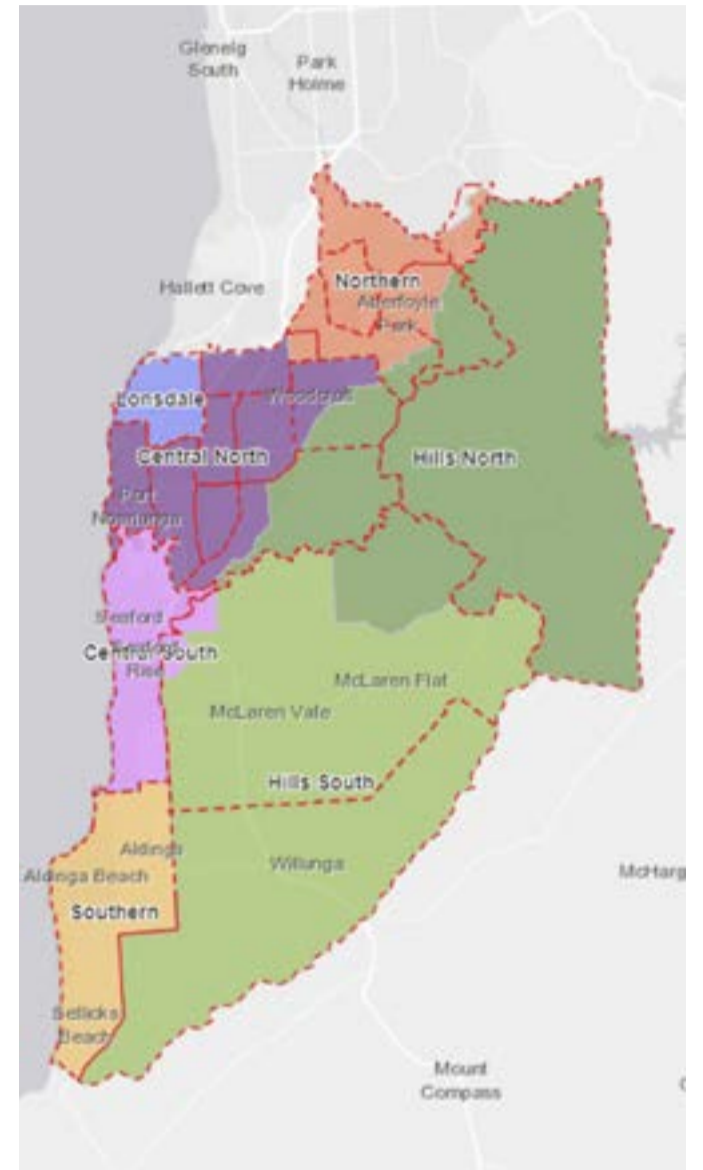
However, we think these numbers are possibly conservative as the district has seen an 'uptick' in migration since COVID with people moving into the area for lifestyle reasons.

We also know that the population, whilst not changing fast, is likely to age. The District already has an older population than Greater Adelaide. In 2021, McLaren Vale, Willunga and surrounds had a higher proportion of persons aged 60 or older than Greater Adelaide. And anecdotally we know that people moving into the region tend towards an older demographic.

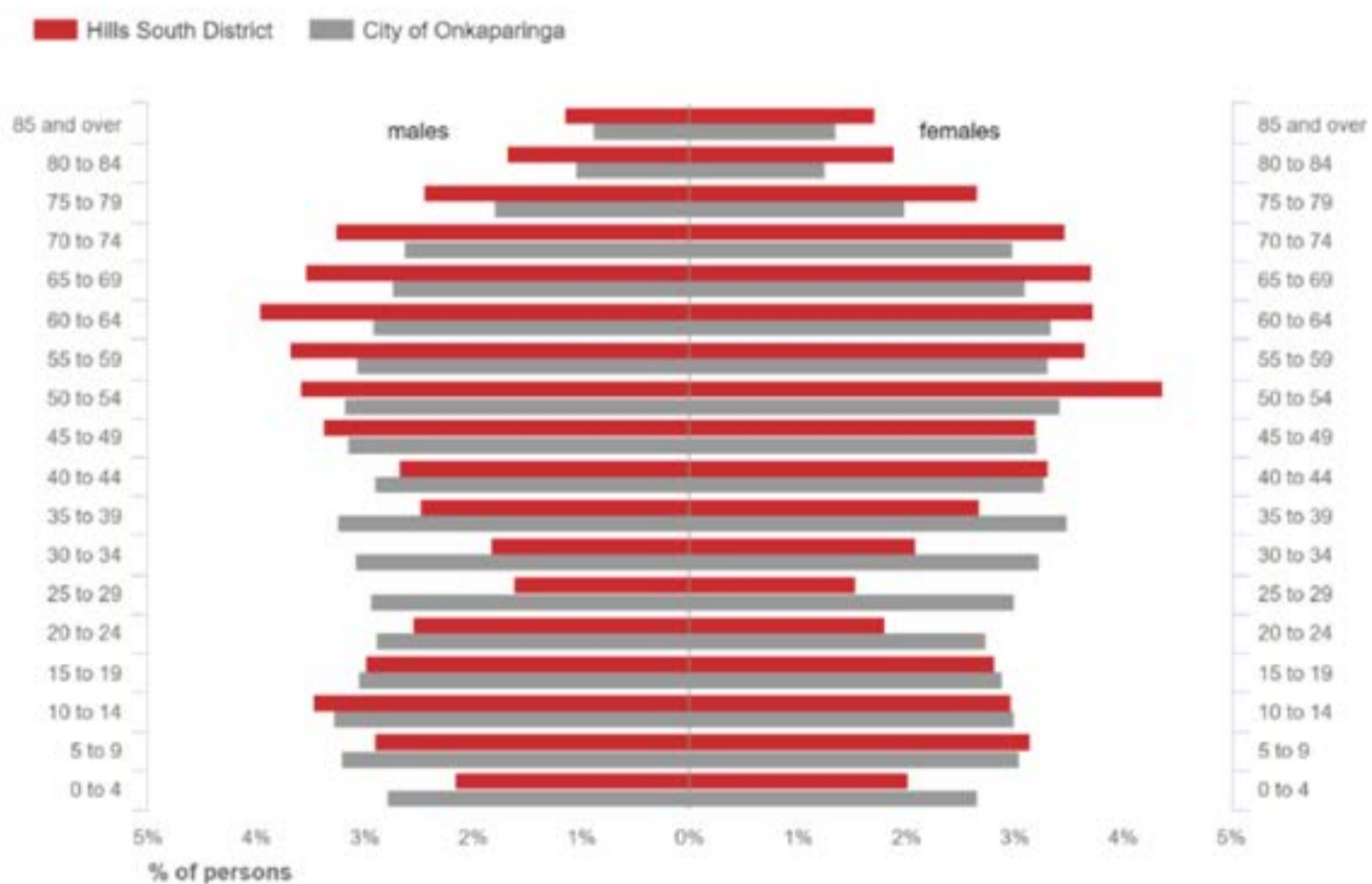
The district has much lower numbers of people aged 20-40 than the Greater Adelaide average.

However, there are similar numbers of young people under the age of 18 to Greater Adelaide.

In the medium term, the trend to an increasingly older population is expected to continue, creating more demand for aged care services and supports.



Age-sex pyramid, 2021



Source: Australian Bureau of Statistics, Census of Population and Housing, selected years between 1991-2021 (Enumerated data). Compiled and presented in profile.id by .id (Informed decisions).



1. 30 Year Plan for Greater Adelaide

2. Source: Department of Trade and Investment [This map](#) outlines the SA2 boundaries in relation to our districts and suburbs, 2020.

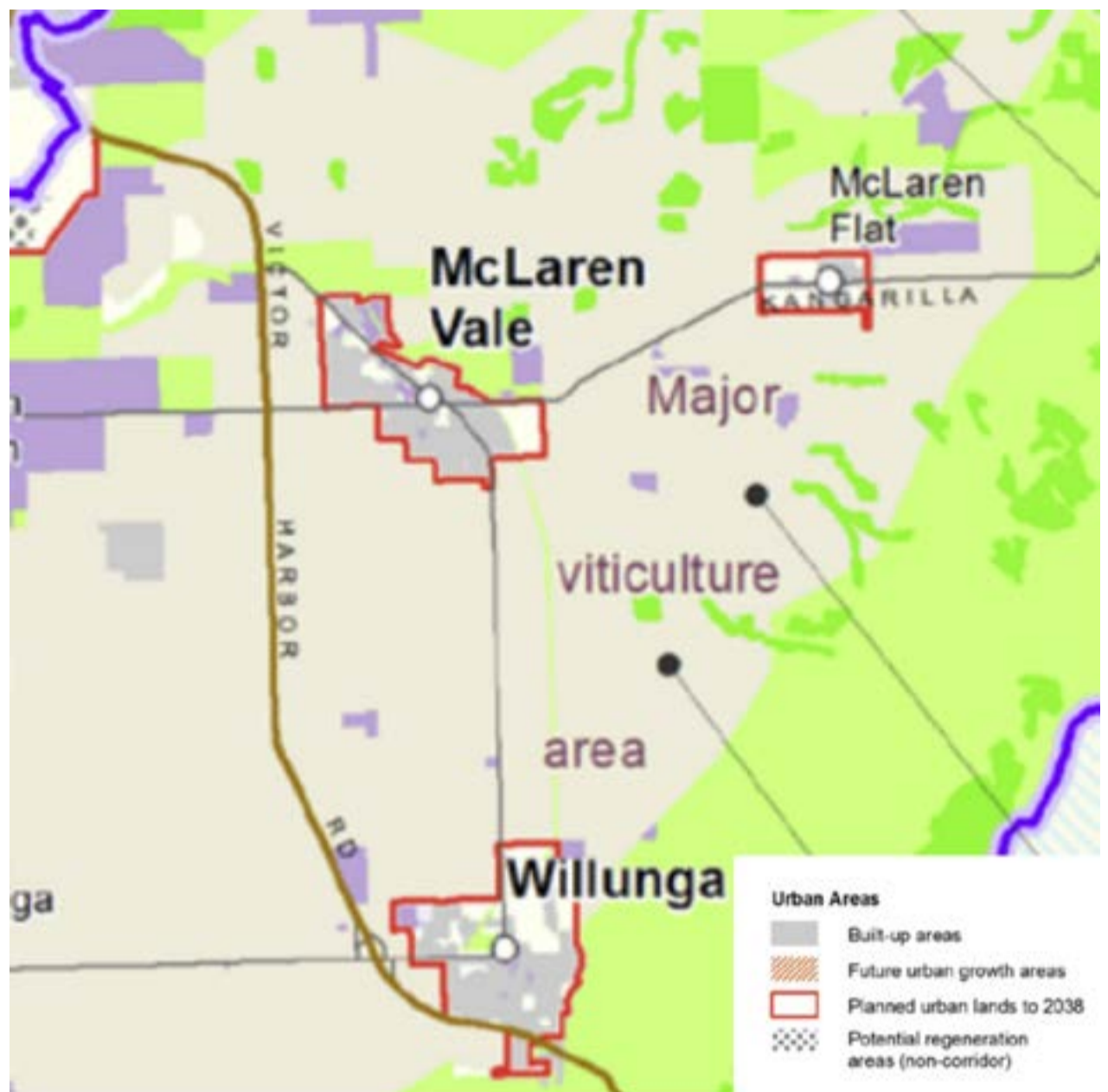
Our Housing & Land

As a consequence of the Barossa and McLaren Vale Character Preservation Act³, the agricultural lands are protected, and the boundary of the township of McLaren Vale cannot grow. Consequently, local service and housing needs will need to be met through existing land within the township's boundary (refer map).

The Onkaparinga City Local Area Plan (OLAP) provides housing growth scenarios for the city over the next 20 years and it is predicting limited growth within the townships of McLaren Vale, McLaren Flat and Willunga.

They estimate the following:

- **McLaren Flat** – there are two current land division proposals providing for some 70 dwellings, with unlikely potential for further growth.
- **McLaren Vale** – through the McLaren Vale Zoning Review the town could provide for an additional 500+ dwellings, (this would be achieved by infill and renewal of existing housing) with approximately 66% of these realistically developed by 2040.
- **Willunga** – through minor infill and subject to rezoning over a portion of the town, it could accommodate approximately additional 100 dwellings.



Our Changing Environment

Into the future a warming climate is likely to impact on agricultural industries – resulting in the need to change plant varieties, management practices, business arrangements and operational scales. This may have resulting impacts on the economic base for the region and hence employment opportunities⁴. In turn this may impact on the population base and demographics.

The drier and hotter conditions also need to be considered in urban design and planning, including any planning for the site.

Our Health

What health services

Currently, people access health services both inside the district and in surrounding urban areas.

The McLaren Vale Hospital site is already home to Wellbeing McLaren Vale – a GP and health service widely used by the community.

The Southern Adelaide Local Health Network also has a range of health services in the region and surrounds, summarised by this map. We note that

some of these health services involve extensive travel via car or public transport for local residents which can create issues of accessibility, especially for older residents or residents living with disability.

What care is needed

Whilst quantifying health needs now and into the future is challenging, what we know is that with an older population McLaren Vale and Districts will need a range of health services locally.

The 2021 census indicates that the most common long term health condition for residents of the district is arthritis, however 36% of the population report having one or more health conditions⁵. People in the district have higher levels of cancer than the Greater Adelaide average.

7% of residents in McLaren Vale need help with their day-to-day lives due to a disability⁶.

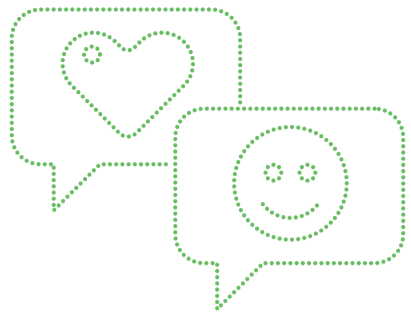


3. [Barossa & McLaren Vale Character Preservation Act](#)

4. <https://cdn.environment.sa.gov.au/landscape/docs/hf/climate-change-and-primary-industries-amlr-rep.pdf>

5. 2021 Census

6. 2021 Census



So, what do we need on the McLaren Vale and Districts Hospital site?

- What aspects of the site do you value and not want to lose?
- What might be needed on the site – in 2 years, 10 years and 30 years?
- What do you want to see improved or changed on the site?

Visit <https://www.surveymonkey.com/r/McLarenHospital> to tell us what you think.





SCAN ME
TO FIND
OUT MORE



There are also a range of ways you can be involved in this process. Visit [Kalyra's Community Engagement web page](#) to find out more and follow our [Community Engagement Facebook page](#).

We acknowledge Aboriginal people as the state's first peoples, nations and Traditional Owners of South Australian land and waters. We recognise that their unique cultural heritage, customs, spiritual beliefs and relationship with the land are of ongoing importance today, and we pay our respects to Elders past and present.