

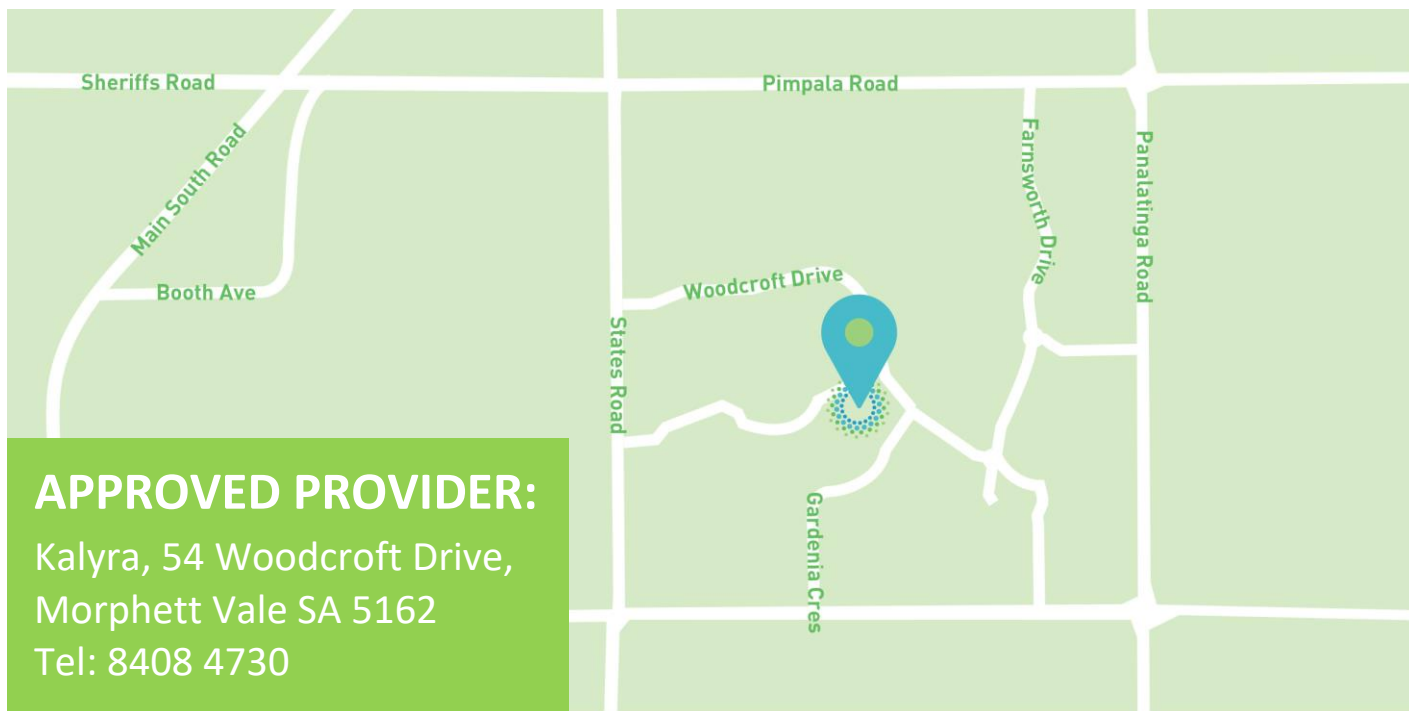


# **Aged Care Features and Pricing Statement**

Kalyra Woodcroft Aged Care



kalyra



## APPROVED PROVIDER:

Kalyra, 54 Woodcroft Drive,  
Morphett Vale SA 5162  
Tel: 8408 4730

## Overview of the Service

Kalyra Woodcroft is a well-established, fully-renovated 88-room facility conveniently located in Woodcroft, offering a quality alternative for residential aged care to older people living in the Southern area. Set in spacious grounds residents are accommodated in smaller houses with single rooms, each with private ensuite bathrooms, share kitchen and lounge area creating a very homelike environment.

A dedicated 27 room memory support unit provides specifically tailored programs with the security of knowing the environment is safe and secure.

Kalyra Woodcroft employs a wide range of skilled professional staff, with registered nurses available around the clock. The staff profile includes a Director of Care, Care Manager, Clinical Nurses, Registered Nurses, Enrolled Nurses and Care workers.

Care is taken to afford your personal freedom and privacy combined with the delivery of care which is based on a holistic approach from an interdisciplinary team.

*Kalyra Woodcroft is a ground-breaking space. It's unique; this is the only co-located aged care facility and school in Australia. The variety and spontaneity is what makes this intergenerational community very special."*

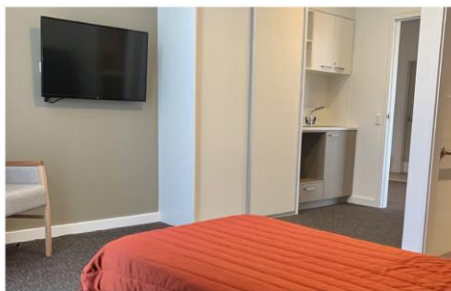
Sara Blunt, Chief Executive Officer, Kalyra

Other features include: some rooms having a kitchenette, all meals cooked in the on-site kitchen daily, Kalyra Café offering snacks or meals for you and your visitors to share, access to an internet kiosk, Church Services on-site and Chaplaincy Services, on-site hairdressing salon, secure memory support unit, Low Care and High Care respite.

You are encouraged to integrate within the community at every opportunity, and this is made possible by two volunteer funded Kalyra buses and the initiatives of the Lifestyle Therapists. Care is taken to afford your personal freedom and privacy combined with the delivery of care which is based on a holistic approach from an interdisciplinary team.

# Our Rooms

PREMIER ROOM	DELUXE ROOM
<p>Single room + private ensuite &amp; kitchenette.</p> <p><b>Newly refurbished rooms incorporating modern lighting, vibrant colour with larger floor space.</b></p>	<p>Single room + private ensuite &amp; kitchenette.</p> <p><b>Newly built luxurious rooms incorporating modern lighting and vibrant colour.</b></p>
<p><b>Size:</b> Each room is approximately 35m2. Including 25m2 of living space, 10m2 in entrance &amp; kitchenette and a generous size ensuite.</p>	<p><b>Size:</b> Each room is approximately 27m2. Including 18m2 of living space, 7m2 in entrance &amp; kitchenette and a generous size ensuite.</p>
<p>Ensuite (2.5 x 2.5m) stylish tiling with a toilet, shower, vanity and grab rails.</p> <p>All rooms equipped with advanced technology to enable freedom of movement &amp; choice.</p> <p>All rooms are appointed with an ensuite bathroom, kitchenette, individual heating and cooling and an outlook to a garden or courtyard area through large ceiling to floor windows. All rooms have an exterior door accessing garden or courtyards.</p> <p>52 inch flat screen televisions are fitted to all rooms.</p>	<p>Ensuite (2.2 x 2.2m) stylish tiling with a toilet, shower, vanity and grab rails.</p> <p>All rooms equipped with advanced technology to enable freedom of movement &amp; choice.</p> <p>All rooms are appointed with an ensuite bathroom, kitchenette, individual heating and cooling and an outlook to a garden or courtyard area through large ceiling to floor windows. All rooms have an exterior door accessing garden or courtyards.</p> <p>52 inch flat screen televisions are fitted to all rooms.</p>
<p><b>Payment Options</b>            DAP only \$60.88      RAD only \$550,000</p> <p><b>Combination</b>            DAP 50% \$30.44      RAD 50% \$275,0</p>	<p><b>Payment Options</b>            DAP only \$55.34      RAD only \$500,000</p> <p><b>Combination</b>            DAP 50% \$27.67      RAD 50% \$250,000</p>



## Payment Options

You can choose to pay for your accommodation by a refundable deposit (RAD), a daily payment (DAP), or a combination of both. A refundable deposit is paid as a lump sum amount.

A daily payment accrues daily and is paid periodically, for example fortnightly. A combination payment includes both a partial lump sum and daily payments. The DAP is calculated using the Maximum Permissible Interest Rate (MPIR) as prescribed by the Minister each quarter and is set at Date of Entry. The current Interest Rate is 4.04% p.a. as at 1<sup>st</sup> July 2021.

Accommodation payment arrangements can be tailored to meet your needs. Please contact our friendly staff on **08 8278 0300** for an obligation free chat and to discuss various options. For respite enquiries, please phone **08 8278 0300**.

Prices published do not apply to you if you are in receipt of/eligible for government support. For more information please refer to our financial information brochure or visit [www.myagedcare.gov.au](http://www.myagedcare.gov.au) website or call **My Aged Care on 1800 200 422**.

## Facility Features

- Community Hub
- Jessie's Place Cafe
- Chapel
- Library
- Hairdressing Salon
- On-site multi-denominational space for celebration, commemoration
- Computers with internet access
- On-site bird life
- Lounges
- Water features
- Designated consultation room for physiotherapy and podiatry
- On-site visitor parking
- Visiting pet therapy pets and resident cat.

## Room Features

- Nurse Call bell
- Telephone, TV and Wifi Connection
- Individual Heating/Cooling
- Fire Sprinkler Protection
- Movement sensors lighting and mates (as needed)
- Built in wardrobe.





## Features of the Service

The Service has many accommodation and/or design features that cater to your needs with regards to lifestyle, social and emotional needs, cultural needs and spiritual needs.

There are design features that are of particular benefit to residents with dementia and mobility challenges.

## Local services and Amenities

- Local shops
- Cafes
- Public Library
- Churches
- Gardens, Parks, Reserves

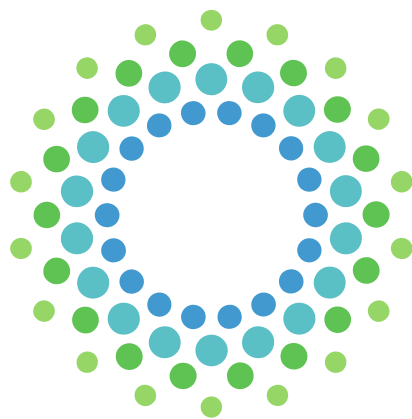
## Additional care and services

(at no additional cost to resident)

Additional care and services (other than care and services specified in the Quality of Care Principles 1997) that the Service provides at no additional cost include:

- Care programs for all residents including those requiring palliative care
- An active and diverse lifestyle program assisted by an extensive volunteer cohort
- Hand massage, manicures, pedicures
- Music Therapy
- Sensory Therapy.

For an additional fee we have a number of optional services available, including bus outings, wi-fi access and beauty treatments including hairdressing. For a full list of optional services and prices, please contact us.



kalyra

54 Woodcraft Drive, Morphett Vale SA 5162

Tel: 08 8408 4730

Email: [info@kalyra.org.au](mailto:info@kalyra.org.au)

[kalyra.org.au](http://kalyra.org.au)

